

Our Fleet

# SEAMEC III

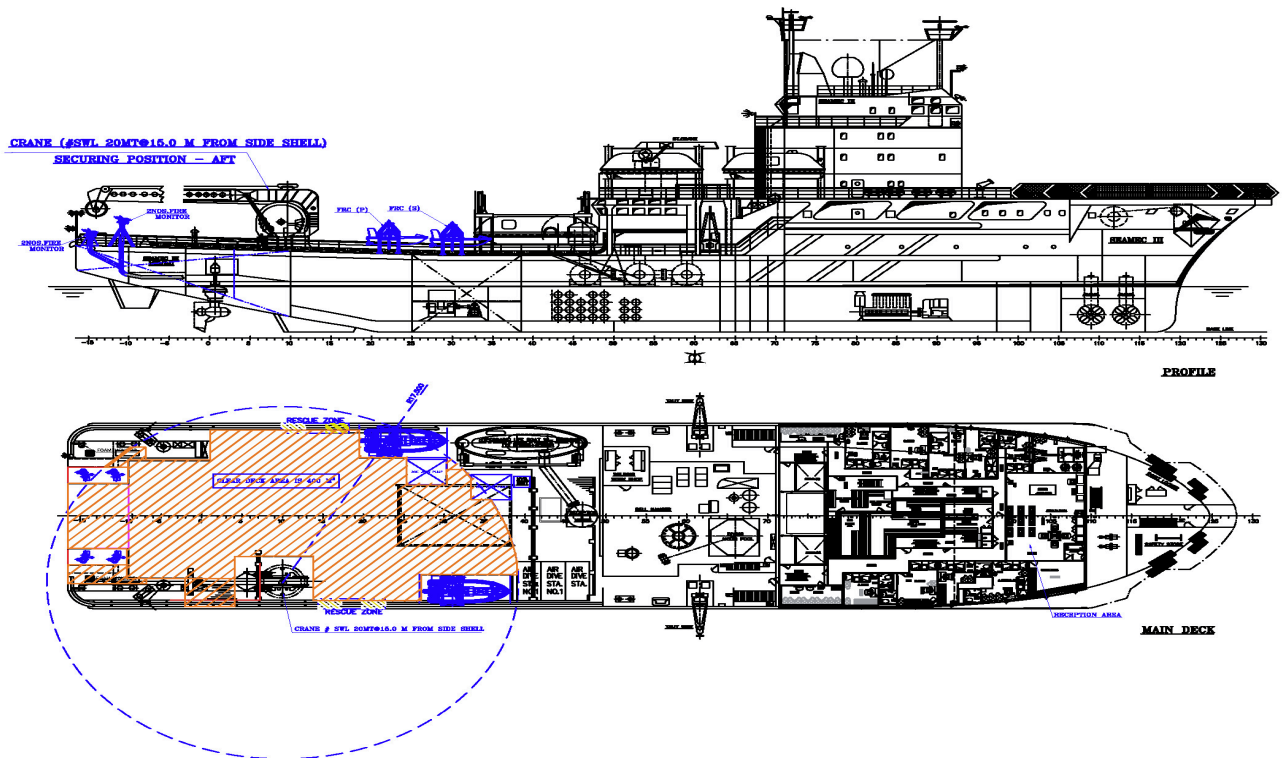
A Multifunctional diving support vessel



SEAMEC LIMITED

MMG™

# Seamec III



## Capabilities

Built in 1983, the vessel is designed, constructed and certified for worldwide operations. The Seamec III provides services, which include S.B.M maintenance removal and installations, Platform, Riser and Pipeline repairs, Subsea constructions and Maintenance operations.

### Diving System

Designed for 300 MSW. (Presently certified to 230 MSW). Three men bell with heave compensated handling system. 'Gas Mizer' reclaim for divers. Two six men and One four man D.D.C.'s. Divers under pressure can be evacuated by means of the hyperbaric lifeboat positioned on the port side. The system includes complete Life Support Machineries with Life Support controls and Dive operation control, along with Dive Control Room, Diver Gas reclaim System and under deck Gas storage of 11,000 m<sup>3</sup> approx and Gas transfer Compressor. The surface air diving station is located on the starboard side.

### Communication

◦GMDSS Compliant equipments available onboard.

### Dynamic Positioning System

The vessel is fitted with a fully redundant Kongsberg SDP 521 Dynamic Positioning system. There are two ( Simrad HiPAP 350 ) hydroacoustic transducers, two satellite positioning systems (DGPS), and two vertical taut wire reference systems and a Laser Radar system.

### Accommodation

Modern accommodation is provided, comprising of:

- 11 x Single berth cabins
- 33 x Double berth cabins
- 02 x Four bed cabins
- 01 x Six bed cabins
- Additional 02 bed Hospital.

### Cranage

The vessel is fitted with 50 tonne telescopic crane and 5 tonne telescopic cargo crane.

The Seamec III is a multi-functional diving support vessel, capable of working throughout the year in severe sea and weather conditions.

# Specifications

## Principle dimensions

Length overall.....92.70 m  
 Length Between pp.....76.20 m  
 Breadth Moulded.....18.00 m

## Operating draft

Summer draft.....5.21 m

Dead weight.....2067 tonnes

## Tonnage

Gross Tonnage.....4327 tonnes  
 Net Tonnage.....1298 tonnes

## Cranage

### Main lifting facilities

- 1 x 50 ton 360° Electro/Hyd.Crane

### Additional lifting facilities

- 1 x 5 ton Stores Crane on Boat deck

## Deck space

More than 350 sq.m

## Deck load

5 tons/sq.m

## Max overall

800 T

## Capacities

- Marine diesel oil 750 m<sup>3</sup>
- Fresh water 335 m<sup>3</sup>
- Ballast water 880 m<sup>3</sup>

## DP system

Kongsberg SDP 521

## Reference Systems

- 2 x Simrad HPR (Hi PAP 350)
- 2 x DGPS
- 2 x Taut wires (MK III)
- 1 x MDL Fan Beam 4.2

## Environmental Regulatory

Number 99/99/94

## Power Plant

- 4 x Man/Brons 25/30 9 cylinder diesel each driving a NEBB. Alternator producing 1700 Kw at 6000 volts 60 Hz

**Total generated power 6800 kW**

## Propulsion

### Bow

- 2 x Brunvoll tunnel thruster, Type SPR-VP, 790 Kw each at 312 RPM

### Stern

- 2 x LIAAEN compass thrusters, Type TCN 105/75-250, 1880 Kw each at 225 RPM

## Endurance

### Fuel consumption (typical)

- In port 4 m<sup>3</sup>
- Transit 14 m<sup>3</sup> @ 8 knots
- DP approx 13 m<sup>3</sup>

### Fresh water making capacity

20 M<sup>3</sup> / day

## Vessel speed

- Speed (at 85% MCR) 10 knots

## Fire Fighting

### Fi-Fi Monitors

- 04 Nos. 1800 cu.m. /hr each.

## Helideck

Bell 212 or similar

## Diving system

- Depth rating 300 MSW (presently available) 230 MSW
- No in sat 18
- No of bells 1 x 3 man
- Bell volume 4.5 m<sup>3</sup>
- System volume 78 m<sup>3</sup>
- Gas storage 11,000 m<sup>3</sup>
- Moonpool 3.5 m x 3.5 m

## Flag

Indian

## Call sign

VWZX

## Classification

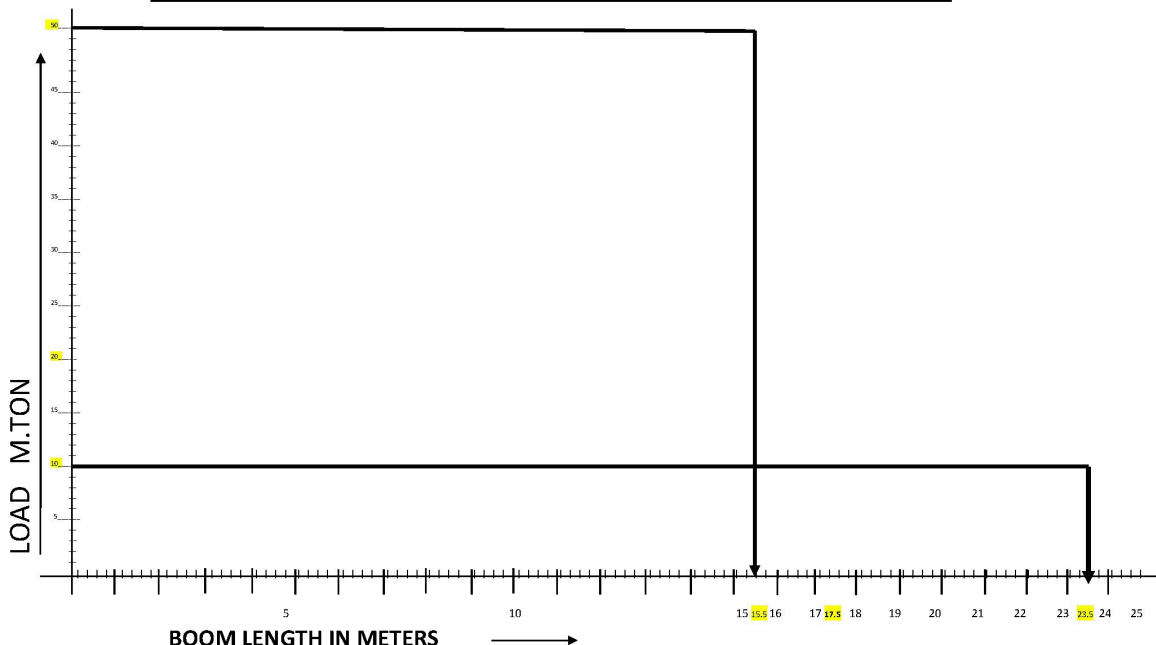
LRS - +100A1 Diving Support Ship / Fire Fighting Ship 2 (7200 M<sup>3</sup> /hr) with water spray; Helicopter Deck; Ice Class 3, +LMC,UMS,DP(AA) IRS - SUL, HELDK,Diving Support Vessel, IY, SYJ, JUS, BWE (s,f), AGNI 1(2400 cum/hr) & AGNI 2 (7200 cum/hr) DP(2)

## Year built / Builder

1983 at De Hoop, Lobith, Holland.

## MSV SEAMEC -III

### LOAD CHART 50 M.TON TELESCOPIC (GRAY MACKENZIE) DECK CRANE





#### CONTACTS

##### **Seamec Limited**

A-901-905, 9<sup>th</sup> Floor, 215 Atrium,  
Andheri-Kurla Road, Andheri East,  
Mumbai – 400 093.

India

Phone: + 91 22 66941800

Fax: + 91 22 66941818

Email: [contact@seamec.in](mailto:contact@seamec.in)

<http://www.seamec.in>

This document is the property of Seamec and is not intended to be a binding contractual document.  
Any information contained herein shall not result in any binding obligation on the part of Seamec,  
Or any of its affiliates, and is provided for information purposes only.



**MMG™**